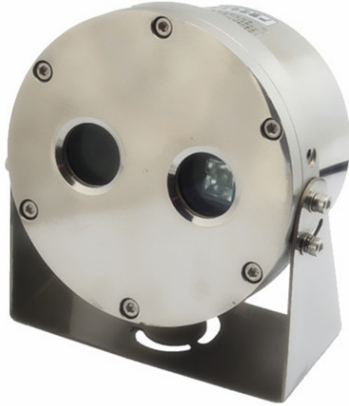


# V-ARMOR SERIES SVEX-B100-AHD-4MM

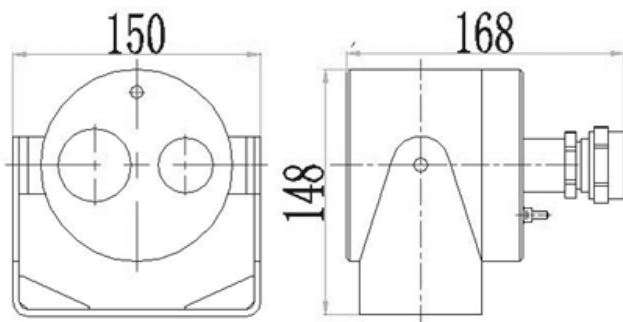
Explosion Proof Smart CCTV Camera With Light



## Features

- Stainless steel 304 or 316L
- Optional electropolished or corrosion resistant paint finish
- Enclosure Protection: IP68
- Exd II CT6 Gb/ Ex tD A21 IP68 T80°C
- Power input: DC12V power supply
- Includes lights for night vision: 0-30m distance
- Application: Oil tank, dangerous goods vehicle, marine vessel

## Dimensions



Units in mm

## Model

|                                  |  |
|----------------------------------|--|
| <b>Atmospheric Pressure</b>      | 80KPa~110Kpa   |
| <b>Ambient Temperature</b>       | -20°C~+60°C  |
| <b>Relative Humidity</b>         | ≤95% (+25°C)   |
| <b>Ex-Proof Mark</b>             | Exd II CT6 Gb/ Ex tD A21 IP68 T80°C                    |
| <b>Explosion Proof Certified</b> | CNEx 16.2526   |
| <b>Ingress Protection</b>        | IP68   |
| <b>Housing Material</b>          | Stainless Steel 304 or 316L                            |
| <b>Image Sensor</b>              | 2.0 Mega Progressive Scan CMOS                         |
| <b>Signal</b>                    | PAL  |
| <b>Effective Pixel</b>           | 1956 x 1266  |
| <b>Min. Illumination</b>         | 0.01Lux @ (F1.2, AGC ON), 0 Lux with IR                |
| <b>Shutter</b>                   | 1/25 sec to 1/50,000 sec                               |
| <b>Lens</b>                      | 3.6mm (6mm optional)                                   |
| <b>Lens Mount</b>                | M12  |
| <b>Day &amp; Night</b>           | IR cut filter with auto switch                         |
| <b>Horizontal Resolution</b>     | 1100TVL  |
| <b>Video Output</b>              | 1 Analog HD output (HD-TVI standard)                   |
| <b>S/N Rate</b>                  | above 62 dB  |
| <b>Auto Gain</b>                 | Lower/ middle/ high/ off                               |
| <b>Color</b>                     | Color/ B&W / IR  |
| <b>White Balance</b>             | auto/ manual   |
| <b>Private Protect</b>           | on/off, 8 zones  |
| <b>Move Detection</b>            | on/off, 4 zones  |
| <b>Exposure</b>                  | total exposure/ wide balance                           |
| <b>3D Noise</b>                  | lower/ middle/ high/ off                               |
| <b>Function</b>                  | SMART IR contrast, sharpness, saturation, mirror, zoom |
| <b>Light Night Vision</b>        | 0-30m  |
| <b>Voltage Input</b>             | DC12V  |
| <b>Power Consumption</b>         | 5W Max   |
| <b>Cable Output</b>              | Integrated cable, 2m long                              |
| <b>Cable Gland</b>               | 1pcs G3/4  |
| <b>Overall Dimension</b>         | 168 x 150 x 148 (L x W x H)                            |
| <b>Net Weight</b>                | 4.3 kg   |
| <b>Material</b>                  | Stainless steel 304 or 316L                            |
| <b>Max Loading</b>               | 20kg   |
| <b>Weight</b>                    | 1.8kg  |