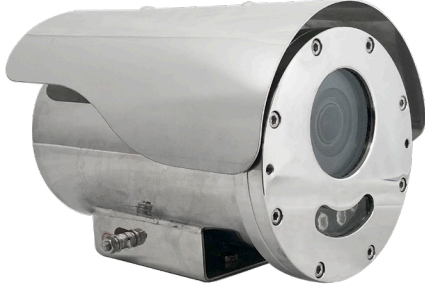


V-ARMOR SERIES SVEX-B25Z-Z



Explosion and Corrosion Proof 2MP or 4MP Bullet Camera with Infrared Light



Key Features

- Class I Div I
- Stainless steel 304 or 316L corrosion proof for marine area
- Optional electropolished or corrosion resistant paint finish
- Enclosure Protection: IP68
- Exd II CT6 Gb/ Ex tD A21 IP68 T80°C
- Fit for gas zone 1, zone 2, dust zone 21, 22
- Power input: DC12V or POE power supply
- With lights for night vision: 0-30m distance
- Camera: 2MP vari-focal bullet camera
- Motorized lens 2.8-12mm
- Optional Audio/alarm I/O
- Application: gas zone 1, 2; dust zone 21, 22.
- Available in 2MP or 4MP Resolution

Specifications

CAMERA	
Atmospheric pressure	80KPa~110Kpa
Ambient Temperature	-20°C~+60°C
Relative Humidity	≤95% (+25°C)
Ex-proof mark	Exd II CT6 Gb/ Ex tD A21 IP68 T80°C
Hazardous Location Classification	Class I Div I
Explosion proof Certified	CNEx 16.2526
Ingress Protection	IP68
Housing Material	Stainless Steel 304 or 316L
Image Sensor	1/2.7" Progressive Scan CMOS
Max. Image Resolution	2.0 megapixel
Frame Rate	Main Stream: 1080P (1920*1080), Max 30fps; Sub Stream: 720P (1280*720), Max 30fps; Third Stream: D1 (704*576), Max 30fps
Min. Illumination:	0.01Lux @(F1.6,AGC ON), 0 Lux with IR

Shutter	Auto/ Manual, 1/100,000 sec				
Lens	2.8 - 12 mm, motorized lens				
DORI DISTANCE					
DORI DISTANCE	Lens(mm)	Detect	Observe	Recognize	Identify
	2.8	42	16.8	8.4	4.2
	12	180	72	36	18
Angle of View (H)	112.7-28.1°				
Angle of View (V)	60.1-15.4°				
Angle of View (O)	146.5-33.2°				
Day& Night:	IR cut filter with auto switch				
S/N	>52dB				
Image Enhancement	2D/3D DNR				
HLC, BLC	Supported				
OSD	Up to 4 OSDs				
Privacy Mask	Up to 8 areas				
ROI	Up to 2 areas				
Motion Detection	Up to 4 areas				
WDR	DWDR				
Video output	1 RJ45 100M Base-TX Ethernet				
Edge Storage	MicroSD, Up to 256GB				
Video Compression	Ultra 265, H.265, H.264, MJPEG				
H.264 type	Baseline Profile, Main profile				
Compatible	ONVIF (Profile S, Profile G, Profile T), API				
Protocols	IPv4, IGMP, ICMP, ARP, TCP, UDP, DHCP, RTP, RTSP, RTCP, DNS, DDNS, NTP, FTP, UPnP, HTTP, HTTPS, SMTP, SSL, QoS				
Compatible integration	ONVIF (Profile S, Profile G, Profile T), API				
Light night vision	0-30m				
Voltage Input	DC 12V±25%, PoE (IEEE 802.3af)				
Power consumption	7.5w Max				
Cable output	Integrated cable, 2m long				
Cable gland	1pcs G3/4 or M25*1.5				
Overall dimension	319*144*168mm (LxWxH)				
Net weight	7.5 kg				

Dimensions

