

SVEX-T300

Explosion Proof PTZ Infrared Camera



VEILUX[®]
The Art of Surveillance





Key features

- ATEX, IECEx, CNEx, CE, Approved;
- Applicable for Gas Zone 1, Zone 2, Class II A, IIB, IIC, T1-T6 group)
- Dust Zone 21, 22.
- Certified for the latest standards IEC/EN60079 (2014)
- Cable glands: M27×1.25
- Cable entry: 2pcs
- Stainless steel 304 or 316L enclosure
- Surface optional electro-polished or painting
- Weather Proof IP68(1.2m/45min)
- Wide voltage input: AC100-240V or AC24V
- Strong tempered glass, fit for hydrofluoric acid area
- Intelligent window defroster design
- Auto temperature adjust kit for aggressive area
- High precision wiper , support user-defined
- Fit for various brand cameras
- Wall, pole, ceiling mounted way

Application

Classic explosion-proof camera, which can load various camera. The explosion proof camera can apply for Zone 1 and Zone 2 hazardous areas that explosive mixture of group IIA, IIB, IIC, T1~T6 gases, vapors and air may exist, Zone 21 and Zone 22 hazardous areas that explosive dust may exist. It's applicable for refining and chemical industry, oil extraction, gas production, fireworks production, grain production and storage, petrol station and so on.

Specifications

Atmospheric pressure	80KPa~110KPa
Ambient Temperature	-25°~+60°/-40°C~+60°
Relative Humidity	≤95% (+25°C)
Ex-proof mark	II 2G Ex db II C T6 Gb,  II 2D Ex tb IIC T80 °C Db 
Certified	ATEX, IECEx, CE
Standards	EN60079-0: 2012+A11: 2013, EN60079-1: 2014, EN60079-31: 2014 IEC60079-0: 2011, IEC60079-1: 2014, IEC60079-31: 2013
Hazardous Area	zone 1, 2 (IIA, IIB, IIC, T1~T6 gases, vapors and air may exist) zone 20, 21 (explosive dust may exist)
Ingress Protection	IP68 (1.2m/45min)
Voltage Input	AC100-240V, or AC24V 50/60Hz
Power	15W/25W (with thermostat) ≤36W (without heat,fan)
Surge Protect	Optional, TVS6000V surge protect
Optical Fiber output	Optional, multimode or single mode
Optical Video signal	1-way video output
Optional network signal	RJ45
Optical Audio	1-way input, 1-way output
Optical Alarm	2-way alarm input, 1-way alarm output
Address code:	0/1
Trail cable	2m integrated cable
Communication type	RS485
Protocol	Pelco-D, Pelco-P
Communicate Rate	2400~19200bps adjustable
485 Communication	Support
Cable thread hole	M27×1.25、G3/4、NPT3/4
Overall dimension	524*179*215mm
Inner dimension	250*78*75 (L*W*H)
Net Weight	16kg
Housing Material	Stainless Steel 304/ 316L
Auto-heating	optional
Auto-cooling	optional
Wiper	Yes
Wiper Control	RS485
Sunshield	Yes
Camera	all kinds of box camera, zoom camera,
Mounted	Wall Mount, Pole Mount (optional)

SVEX-T300

Explosion Proof PTZ Infrared Camera



VEILUX[®]
The Art of Surveillance

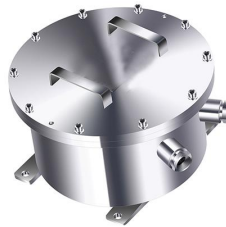
Certificates



Relatives



Ex Housing for thermal camera



Ex Control Box



SVEX-M1 Wall Bracket with Mount Adapter

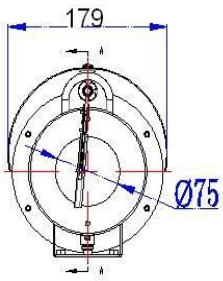
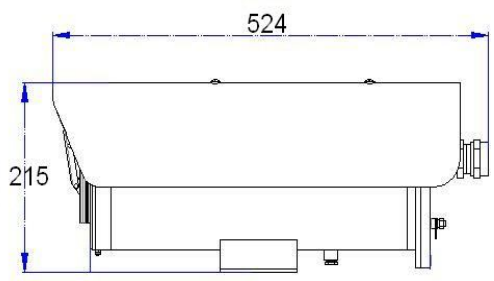
SVEX-T300

Explosion Proof PTZ Infrared Camera

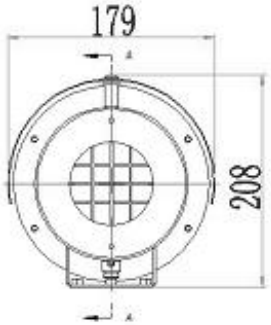
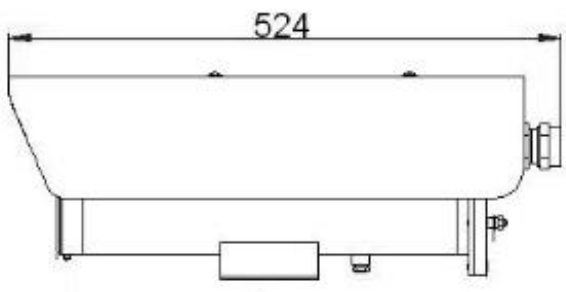


VEILUX[®]
The Art of Surveillance

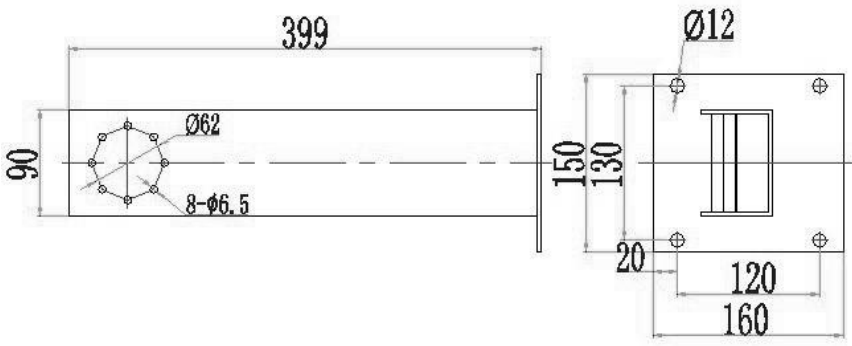
Dimensions



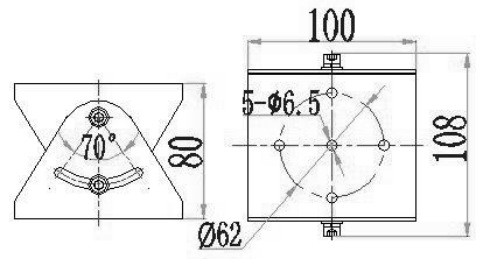
SVEX-T300



Ex Housing for thermal camera



Wall bracket



Mount adapter