

# SVEX-T300

Explosion-proof Camera Housing



**VEILUX**<sup>®</sup>  
The Art of Surveillance





## Key features

- ATEX, IECEx, CNEx, CE, Approved;
- Applicable for Gas Zone 1, Zone 2, Class II A, IIB, IIC, T1-T6 group)
- Dust Zone 21, 22.
- Certified for the latest standards IEC/EN60079 (2014)
- Cable glands: M27×1.25
- Cable entry: 2pcs
- Stainless steel 304 or 316L enclosure
- Surface optional electro-polished or painting
- Weather Proof IP68(1.2m/45min)
- Wide voltage input: AC100-240V or AC24V
- Strong tempered glass, fit for hydrofluoric acid area
- Intelligent window defroster design
- Auto temperature adjust kit for aggressive area
- High precision wiper , support user-defined
- Fit for various brand cameras
- Wall, pole, ceiling mounted way

## Application

Classic explosion-proof camera housing, which can load various camera. The explosion proof camera can apply for Zone 1 and Zone 2 hazardous areas that explosive mixture of group IIA, IIB, IIC, T1~T6 gases, vapors and air may exist, Zone 21 and Zone 22 hazardous areas that explosive dust may exist. It's applicable for refining and chemical industry, oil extraction, gas production, fireworks production, grain production and storage, petrol station and so on.

## Specifications

<b>Atmospheric pressure</b>	80KPa~110KPa
<b>Ambient Temperature</b>	-25°~+60°/-40°C~+60°
<b>Relative Humidity</b>	≤95% (+25°C)
<b>Ex-proof mark</b>	II 2G Ex db II C T6 Gb,  II 2D Ex tb IIC T80 °C Db 
<b>Certified</b>	ATEX, IECEx, CE
<b>Standards</b>	EN60079-0: 2012+A11: 2013, EN60079-1: 2014, EN60079-31: 2014 IEC60079-0: 2011, IEC60079-1: 2014, IEC60079-31: 2013
<b>Hazardous Area</b>	zone 1, 2 (IIA, IIB, IIC, T1~T6 gases, vapors and air may exist) zone 20, 21 (explosive dust may exist)
<b>Ingress Protection</b>	IP68 (1.2m/45min)
<b>Voltage Input</b>	AC100-240V, or AC24V 50/60Hz
<b>Power</b>	15W/25W (with thermostat) ≤36W (without heat,fan)
<b>Surge Protect</b>	Optional, TVS6000V surge protect
<b>Optical Fiber output</b>	Optional, multimode or single mode
<b>Optical Video signal</b>	1-way video output
<b>Optional network signal</b>	RJ45
<b>Optical Audio</b>	1-way input, 1-way output
<b>Optical Alarm</b>	2-way alarm input, 1-way alarm output
<b>Address code:</b>	0/1
<b>Trail cable</b>	2m integrated cable
<b>Communication type</b>	RS485
<b>Protocol</b>	Pelco-D, Pelco-P
<b>Communicate Rate</b>	2400~19200bps adjustable
<b>485 Communication</b>	Support
<b>Cable thread hole</b>	M27×1.25、G3/4、NPT3/4
<b>Overall dimension</b>	524*179*215mm
<b>Inner dimension</b>	250*78*75 (L*W*H)
<b>Net Weight</b>	16kg
<b>Housing Material</b>	Stainless Steel 304/ 316L
<b>Auto-heating</b>	optional
<b>Auto-cooling</b>	optional
<b>Wiper</b>	Yes
<b>Wiper Control</b>	RS485
<b>Sunshield</b>	Yes
<b>Camera</b>	all kinds of box camera, zoom camera,
<b>Mounted</b>	Wall Mount, Pole Mount (optional)

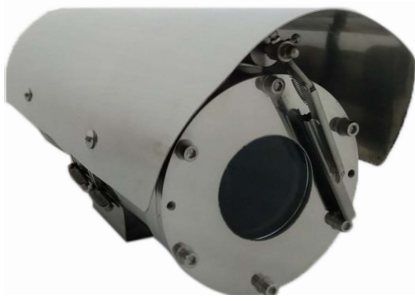
# SVEX-T300

Explosion-proof Camera Housing



**VEILUX**<sup>®</sup>  
*The Art of Surveillance*

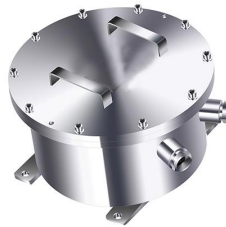
## Certificates



## Relatives



**Ex Housing for thermal camera**



**Ex Control Box**



**SVEX-M1 Wall Bracket with Mount Adapter**

# SVEX-T300

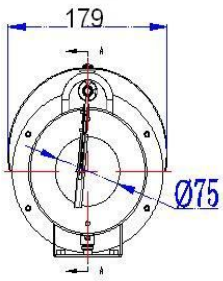
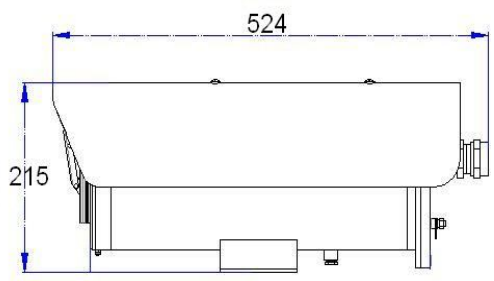
Explosion-proof Camera Housing



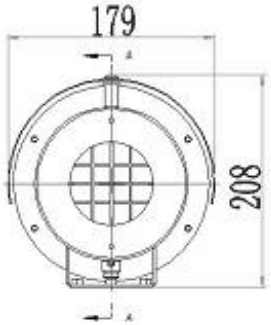
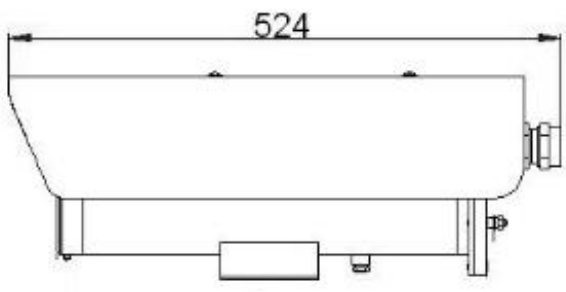
# VEILUX®

The Art of Surveillance

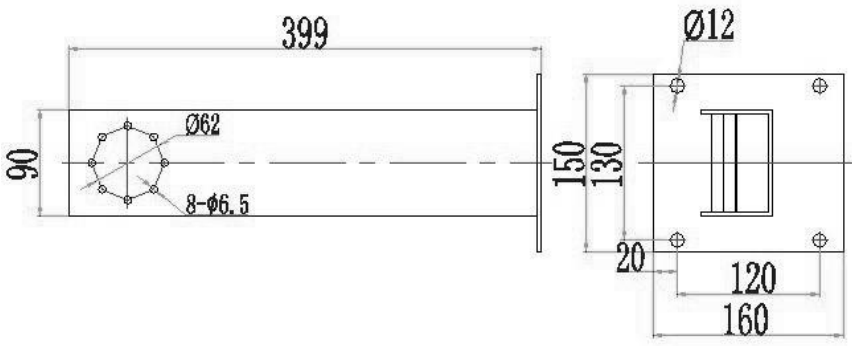
### Dimensions



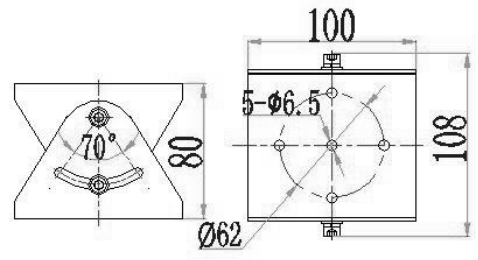
**SVEX-T300**



**Ex Housing for thermal camera**



**Wall bracket**



**Mount adapter**